

This guide will outline how to connect to the **TAFESA-BYOD** (Bring Your Own Device) Wi-Fi network on a Windows 10 laptop.

### Who is it for?

Anyone with an active TAFE SA account and password can connect their personal laptop, phone, or tablet to the network. Have your account username and password ready.

### Examples of a TAFE SA username:

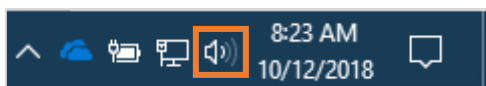
Student: [john.smith@student.tafesa.edu.au](mailto:john.smith@student.tafesa.edu.au) or 012345678

or

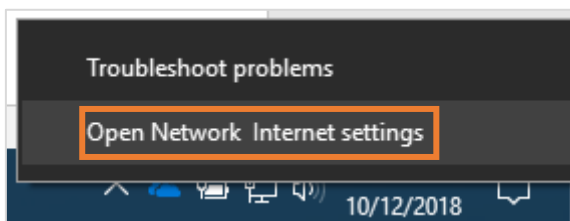
Staff: [jane.smith@tafesa.edu.au](mailto:jane.smith@tafesa.edu.au) or SmithJ

### Windows 10 Laptop

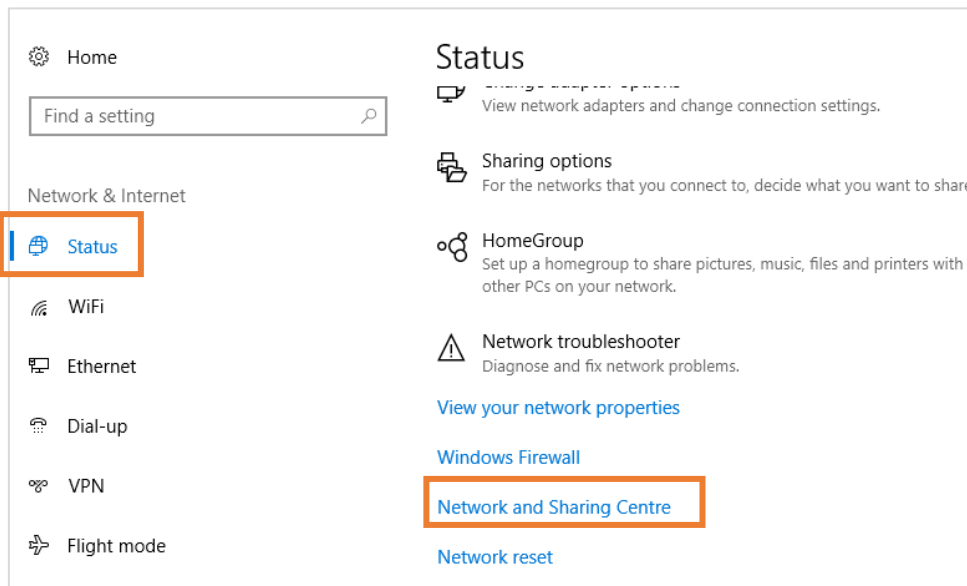
1. Log in to your laptop and ensure you are in range of TAFE SA Wi-Fi (for example, in the campus library or common student area).
2. Right click on the Network icon from your task bar (lower right corner).



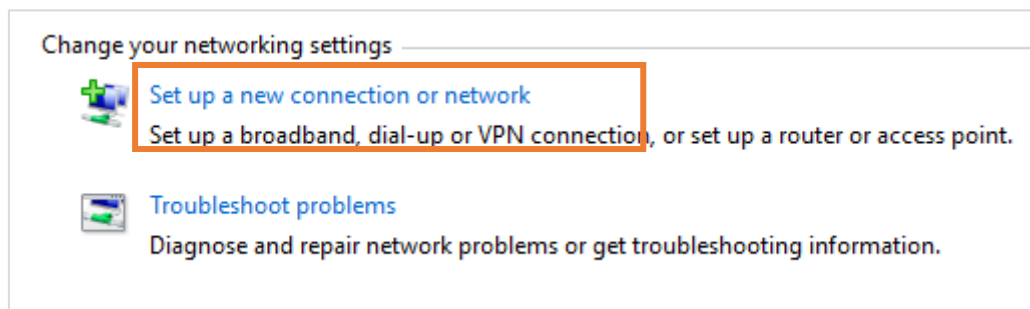
3. Select **Open Network Internet settings**.



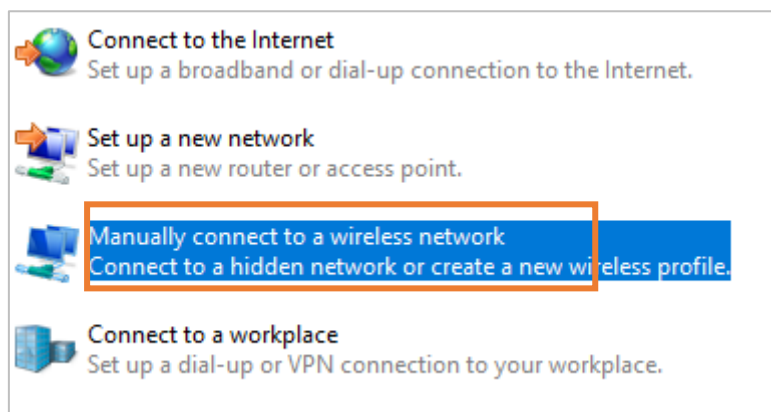
4. Ensure **Status** is selected on the left-side menu. On the right side, scroll down and select **Network and Sharing Centre**.



5. Select **Set up a new connection or network**.



6. Select **Manually connect to a wireless network** and click **Next**.



7. Type the details as shown below and then click **Next**.
  - a) Network Name – TAFESA-BYOD
  - b) Security Type – WPA2-Enterprise
  - c) Encryption Type – AES

Enter information for the wireless network that you want to add

Network name: TAFESA-BYOD

Security type: WPA2-Enterprise

Encryption type: AES

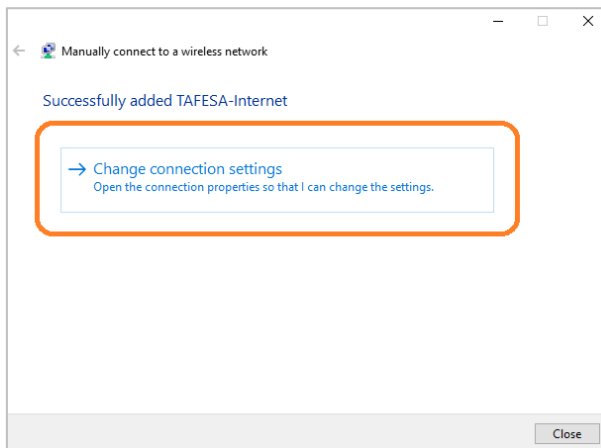
Security Key:   Hide characters

Start this connection automatically

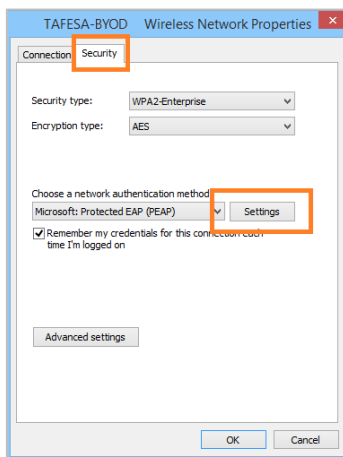
Connect even if the network is not broadcasting  
Warning: If you select this option, your computer's privacy might be at risk.

Next Cancel

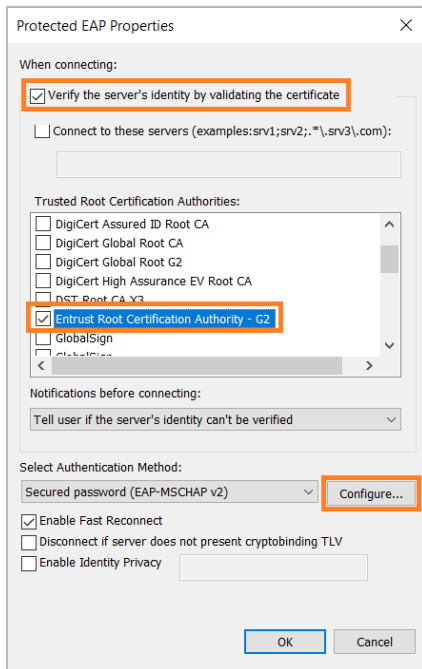
8. Select **Change connection settings**.



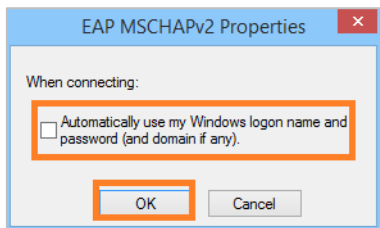
9. Select the **Security** tab and click the **Settings** button, next to the **Choose a network authentication method**.



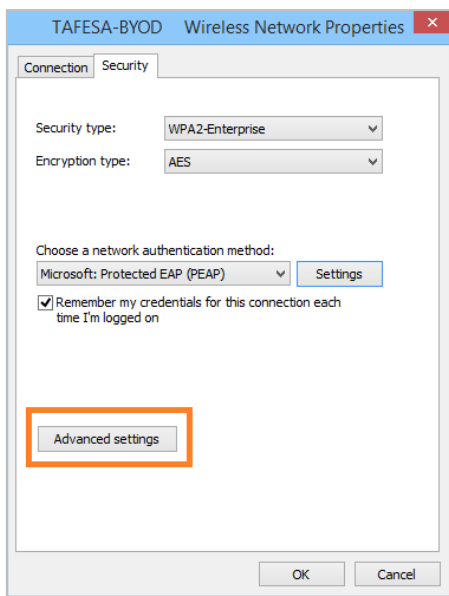
10. Tick the box next to **Verify the server's identity by validating the certificate**, and then further down locate and tick the box next to **Entrust Root Certification Authority G2**. Under Select Authentication Method, select the **Configure** button.



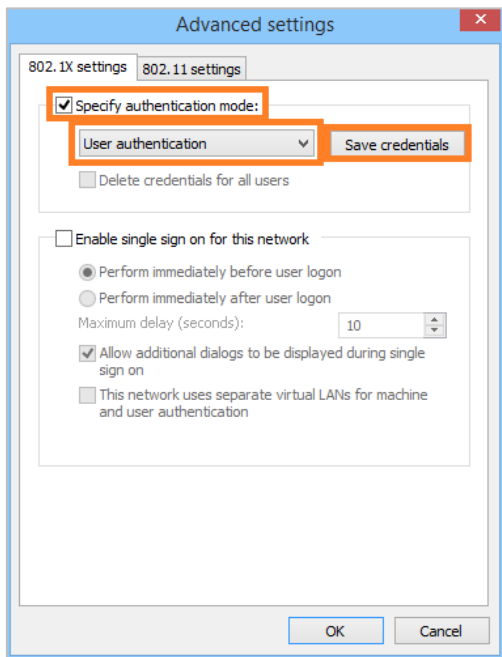
11. Ensure the box next to **Automatically use my Windows logon name and password** is unticked and then click **OK** twice.



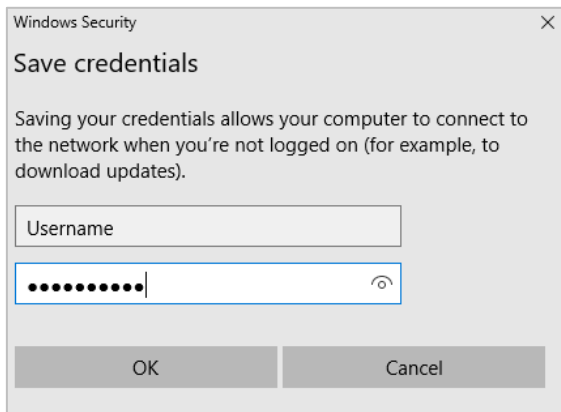
12. Click on the **Advanced settings** button.



13. Tick the box next to **Specify authentication mode** and adjust the drop-down menu to select **User authentication**. Click on **Save credentials**.



14. Enter your TAFE SA username and password where prompted. Click **OK** three times and then click **Close**.



15. You should now be connected to the TAFESA-BYOD Wi-Fi network.