

This guide will outline how to connect to the **TAFESA-BYOD** (Bring Your Own Device) Wi-Fi network on an Apple Mac laptop.

Who is it for?

Anyone with an active TAFE SA account and password can connect their personal laptop, phone, or tablet to the network. Have your account username and password ready.

Examples of a TAFE SA username:

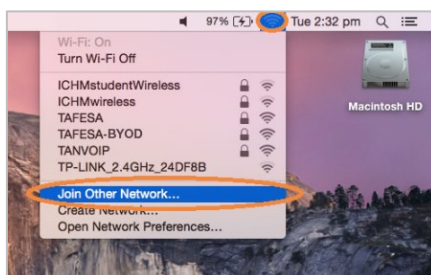
Student: john.smith@student.tafesa.edu.au or 012345678

or

Staff: jane.smith@tafesa.edu.au or SmithJ

Mac OS X Laptop (10.15.6)

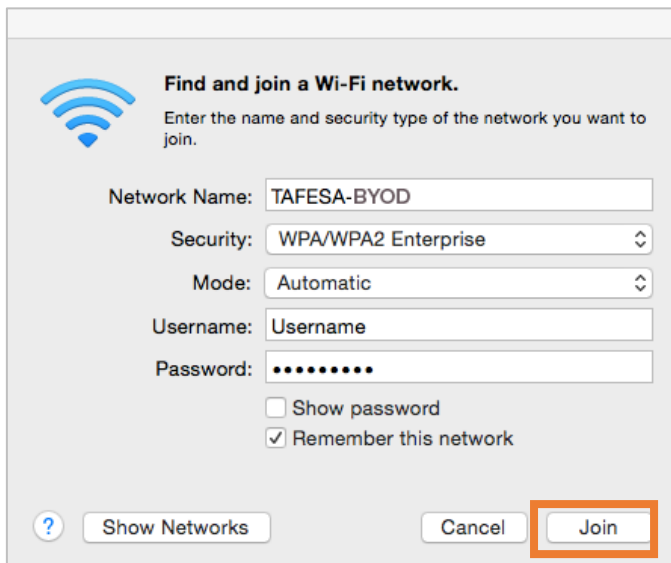
1. Log in to your laptop and ensure you are in range of TAFE SA Wi-Fi (for example, in the campus library or common student area).
2. From the taskbar in the top right-hand corner of your screen click on the network icon as shown in the picture below. Check Wi-Fi is ON and click **Join Other Network**.



3. Change Security to **WPA/WPA2 Enterprise**.



4. Type **TAFESA-BYOD** in the Network Name field and type in your TAFE SA username and password in the appropriate fields. Click **Join**.

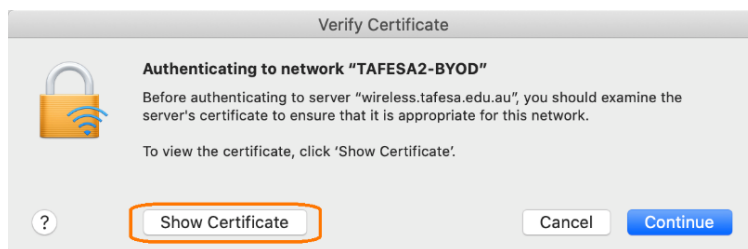


5. Click **Show Certificate** and confirm that it is valid with the following details:

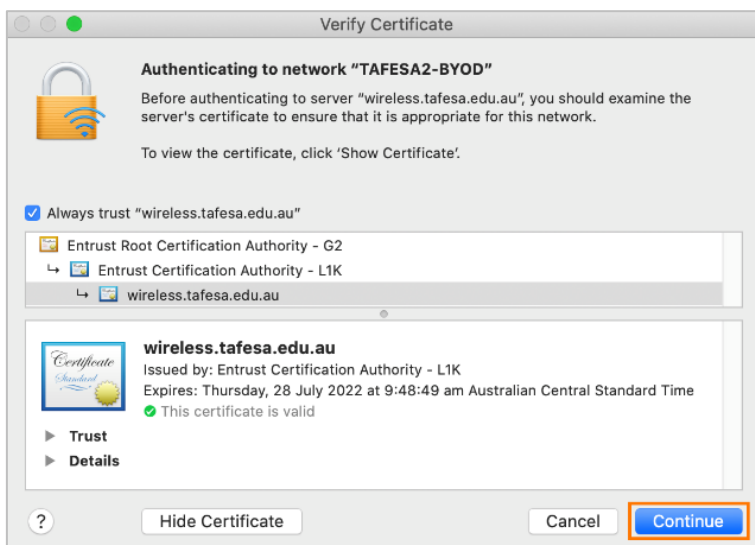
Certificate Details:

Issued to AU, Adelaide, TAFE SA wireless.tafesa.edu.au

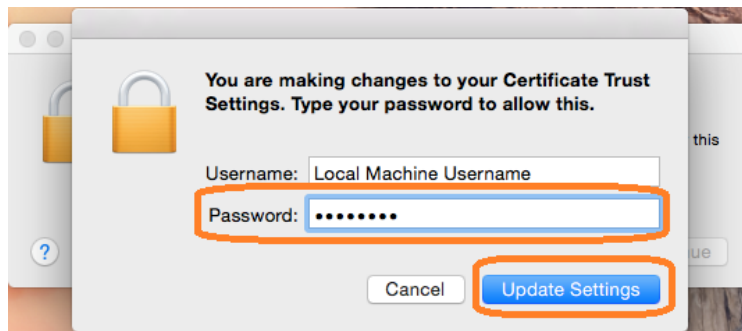
Issued by Entrust Certification Authority – L1K, Entrust Root Certifications Authority – G2



6. Click **Continue** when prompted by the Verify Certificate warning as below.



7. Enter your personal computer account details to allow changes to Certificate Trust settings. Click **Update Settings**.



8. Your laptop should now be connected to the TAFESA-BYOD Wi-Fi network.

