

JOB ROLE

LANDSCAPE GARDENER

LEVEL OF GROWTH FOR JOB ROLE



- > Projected change of +2.5%
- > From 84,300 in 2023 to 86,400 in 2028

AVERAGE SALARY FOR OCCUPATION



Entry level
(1-3 years' experience)



Senior
(8+ years' experience)

WHAT DO EMPLOYERS WANT?



SPECIALISED SKILLS

- > Irrigation
- > Power Tools
- > Lifting Ability
- > Weed Control
- > Bush Regeneration

EMPLOYABILITY SKILLS

- > Planning
- > Time Management
- > Communication Skills
- > Detail-Orientated
- > Problem Solving

EMPLOYMENT PROSPECTS



TOP SOUTH AUSTRALIAN INDUSTRIES WHO ADVERTISED FOR THIS JOB ROLE IN THE PREVIOUS 12 MONTHS:

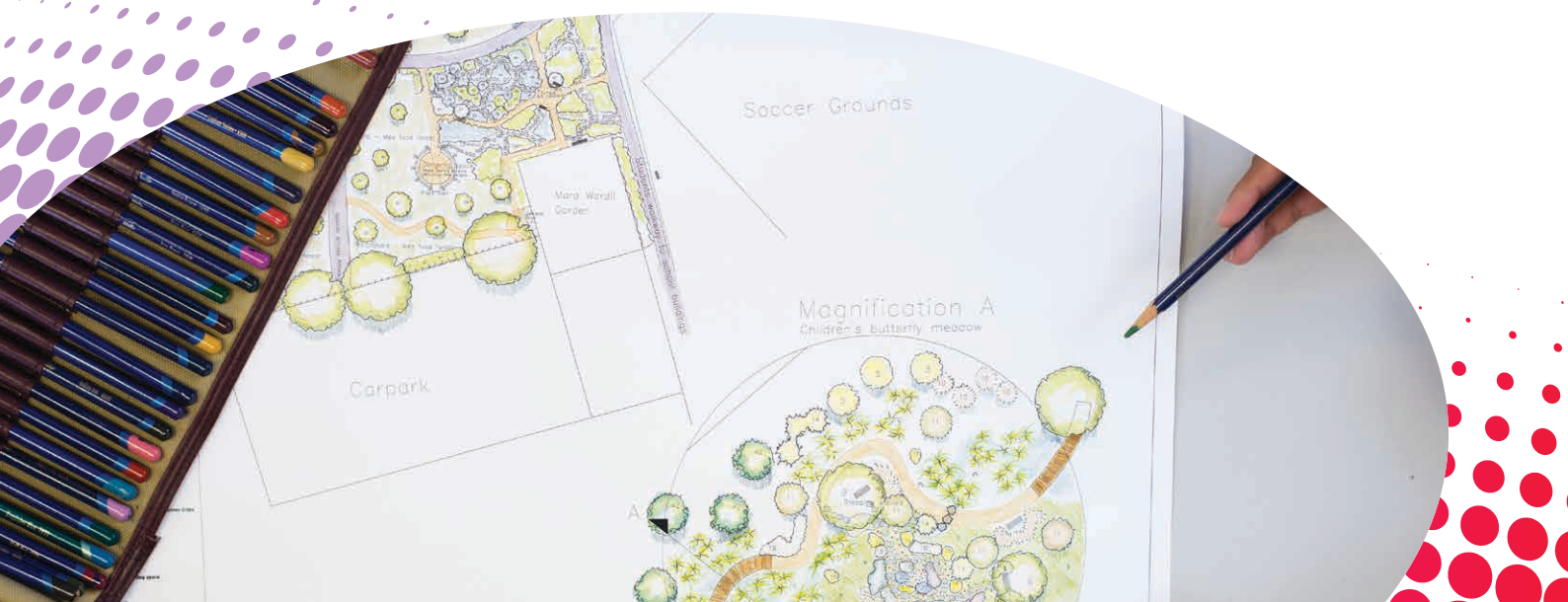
- > Other Social Assistance Services
- > Other Heavy and Civil Engineering Construction
- > Local Government Administration

TOP SOUTH AUSTRALIAN EMPLOYERS WHO ADVERTISED FOR THIS JOB ROLE IN THE PREVIOUS 12 MONTHS:

- > Bedford Group
- > Australian Red Cross
- > LD Total
- > DA & HT Brown
- > Commercial Gardens Australia

YOU MIGHT CONSIDER UNDERTAKING STUDY TO TRANSITION INTO THESE RELATED JOB ROLES:

- > Landscape Architect
- > Nurseryperson





QUALIFICATION PATHWAYS

Looking to progress your career? TAFE SA can help you further your study with these courses (*fees may apply)

- > Certificate III in Landscape Construction (AHC30921)
- > Diploma of Landscape Design (AHC50621)

Or undertake a range of short courses to supplement your existing knowledge or continue upskilling.

Further information available on the TAFE SA website.



JOB HOLDER COMMENTS

“I had been a gardener for 15 years and I wanted to transition from physical work to designing gardens. I have studied at TAFE SA since I was 16 – it has always been my go-to point for further education. I loved the new knowledge! The lecturers were brilliant and I loved the relaxed environment for learning.”

Cathy Apps
Diploma of Landscape Design (AHC50616)



NETWORKING WITH INDUSTRY

Networking with industry provides you with opportunities to gain employment, advance your career and stay current with industry changes.

Conferences and workshops are an excellent way to introduce yourself to key industry contacts. Upcoming events include:

- > **Horticulture Competition**
Royal Adelaide Show
Various dates 31st August - 8th September 2024
Adelaide Showgrounds

Follow these organisations on social media:

- > Green Adelaide
- > Landscape South Australia
- > Gardening Australia
- > Australian Institute of Landscape Architects

Consider these opportunities to find employment:

- > Send your resume to relevant businesses in your local area
- > Look for employment opportunities advertised on
 - the TAFE SA Jobs Board
 - online employment websites like Seek
 - the job board on your local Regional Development Australia (RDA) website



CAREER SUPPORT

Not sure where to start? TAFE SA's Student Services can provide you with a range of career planning support including:

- > career planning
- > write a winning resume
- > how to respond to selection criteria
- > cover letters that stand out
- > preparing for job interviews

To find out more, or to book an appointment, visit TAFE SA's Career Support Page: Career Support (tafesa.edu.au)

Data sources:

Industry and job role data sourced 2024 from Lightcast™.(2022). "Labor Insight™ Real-Time Labor Market Information Tool." Retrieved from <https://labourinsight.lightcast.io/anz>.

Level of Growth for Job Role data sourced 2024 from Employment Projections, Jobs and Skills Australia © Commonwealth of Australia. Jobs and Skills Australia monitors the quality of information available on this website and updates this regularly however Jobs and Skills Australia does not make any representation or warranty about the accuracy, reliability, currency, or completeness of any material contained on this website or on any linked site.

Salaries are based on the Median Australian Salary from "https://www.salaryexpert.com" Salary Expert. Experienced salary levels may require additional study. Salaries may vary in your location. Information is accurate as of January 2024 and is to be used as a guide only.

TAFE SA and the publisher take no responsibility, and will accept no liability, for the accuracy, currency, reliability, or correctness of the networking options. Readers should make their own inquiries and rely on their own advice when making decisions related to material contained in this publication.